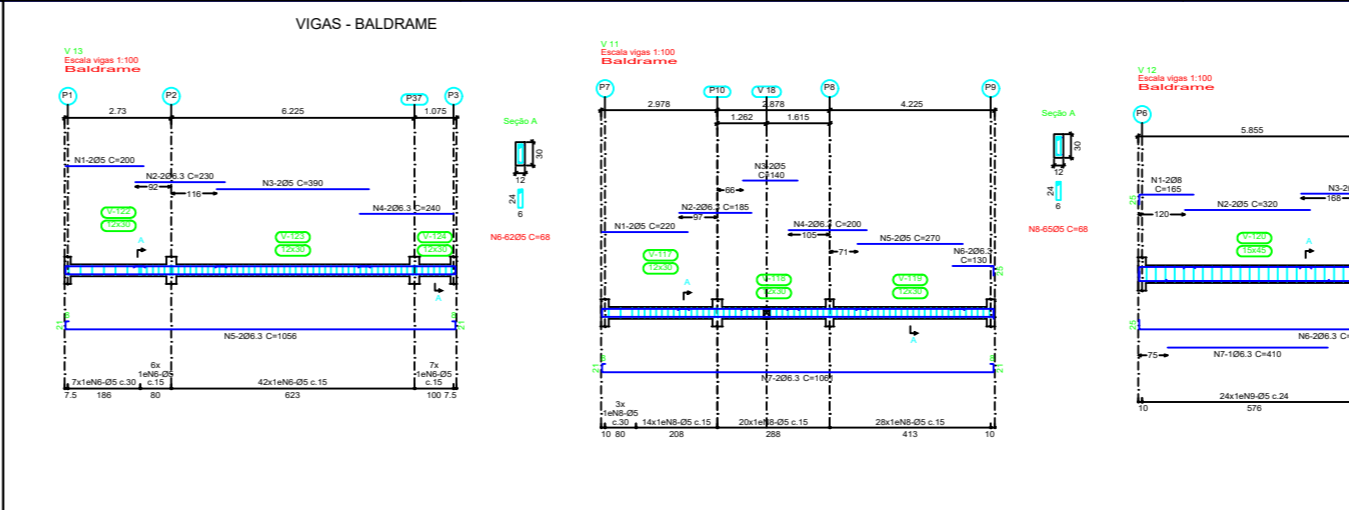
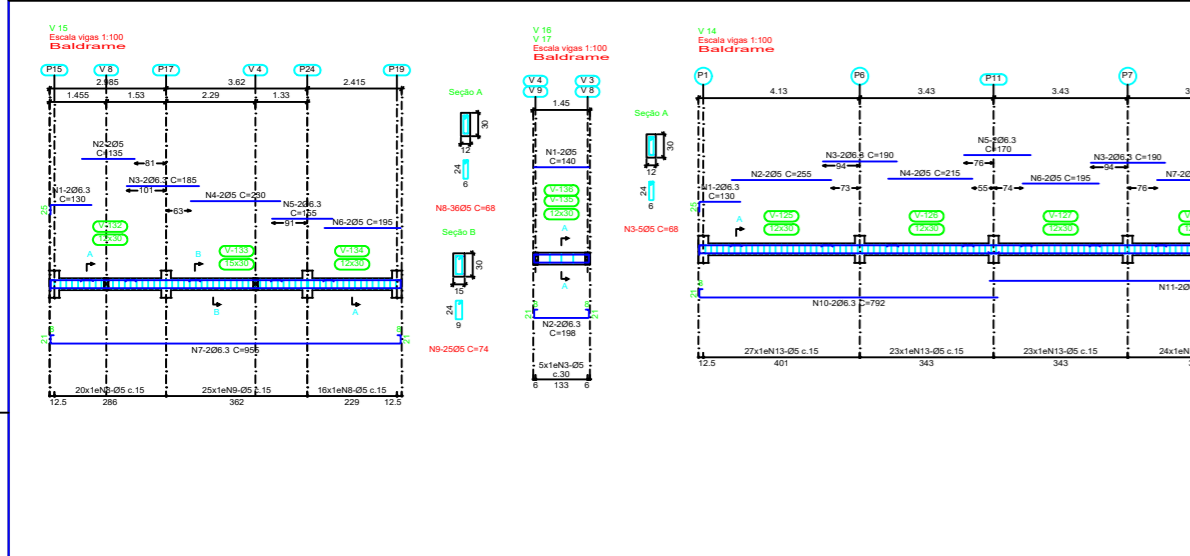


Elemento	Pos.	Diam.	Q.	Dob (cm)	Ret (cm)	Dob (cm)	Comp (cm)	Total (cm)	CA-50 (kg)	CA-60 (kg)
V 6	1	06.3	2	25	100	120	240	0.8	0.8	
	2	05	2	25	200	200	240	2.4	2.7	
	3	06.3	2	29	318	29	376	7.2	1.9	
	4	05	18	5	58	5	68	12.24	1.8	
Total: 19.7										

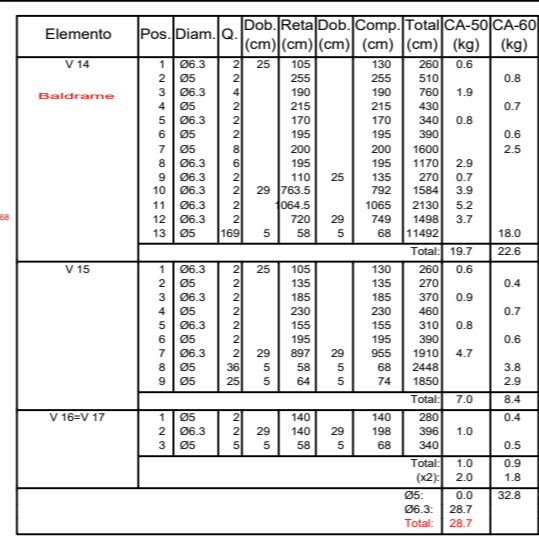


Elemento	Pos.	Diam.	Q.	Dob (cm)	Ret (cm)	Dob (cm)	Comp (cm)	Total (cm)	CA-50 (kg)	CA-60 (kg)
V 11	1	05	2	25	220	220	440	0.7	0.4	
	2	06.3	2	29	185	185	370	0.9	0.7	
	3	05	2	25	320	320	360	0.8	0.4	
	4	06.3	2	29	200	200	400	1.0	0.8	
	5	06.3	2	270	25	270	540	5.2	0.6	
	6	05	2	29	100	29	129	2.12	5.2	
Total: 7.7										

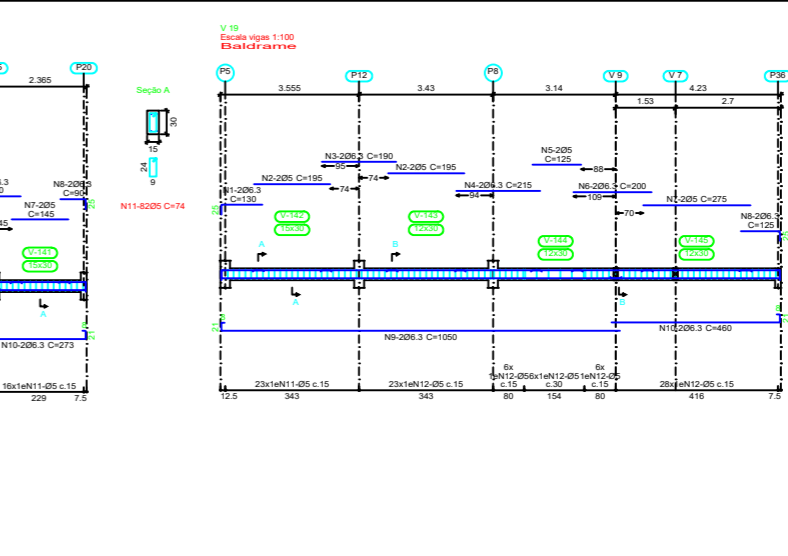
Elemento	Pos.	Diam.	Q.	Dob (cm)	Ret (cm)	Dob (cm)	Comp (cm)	Total (cm)	CA-50 (kg)	CA-60 (kg)
V 12	1	06.3	2	25	140	165	330	1.3	1.0	
	2	05	2	25	320	320	360	0.8	0.7	
	3	06.3	2	270	25	270	540	5.2	0.6	
	4	05	2	225	225	450	0.5	0.5		
	5	06.3	2	160	160	320	0.8	0.7		
	6	05	2	105	25	130	260	1.0	1.0	
Total: 11.4										



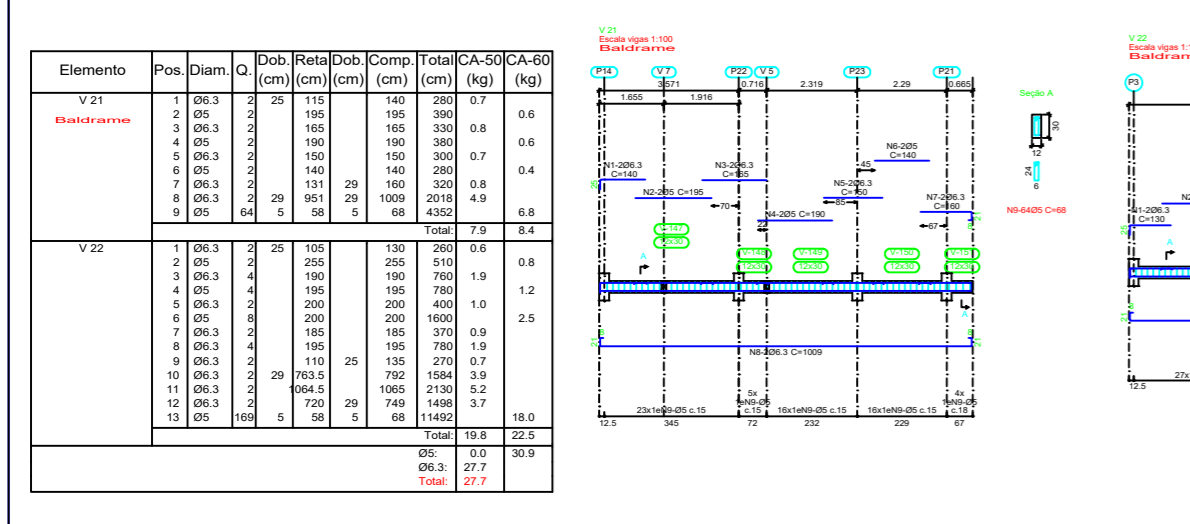
Elemento	Pos.	Diam.	Q.	Dob (cm)	Ret (cm)	Dob (cm)	Comp (cm)	Total (cm)	CA-50 (kg)	CA-60 (kg)
V 14	1	06.3	2	25	105	130	260	0.6	0.8	
	2	05	2	25	200	200	240	1.9	0.7	
	3	06.3	4	145	145	170	340	0.8	0.6	
	4	05	2	210	210	420	0.8	0.6		
	5	05	2	170	170	340	0.8	0.6		
	6	05	2	200	200	400	0.8	0.6		
	7	05	2	195	195	390	0.8	0.6		
	8	06.3	6	195	195	1170	2.9	2.9		
	9	06.3	2	29	763.5	25	110	110	3.9	3.9
	10	06.3	2	29	763.5	25	1065	2130	5.2	5.2
	11	05	160	5	58	5	68	1408	3.7	3.7
Total: 19.7										



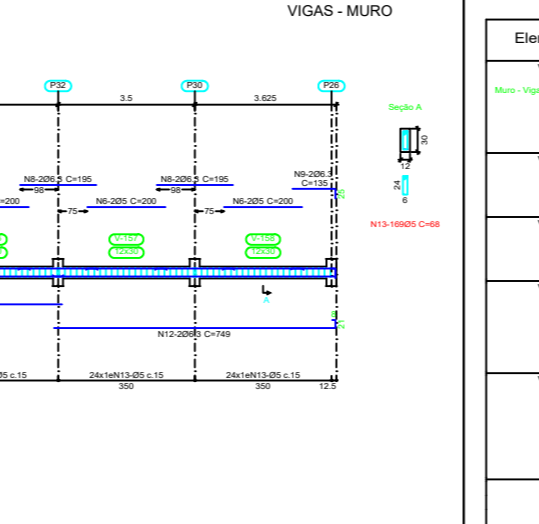
Elemento	Pos.	Diam.	Q.	Dob (cm)	Ret (cm)	Dob (cm)	Comp (cm)	Total (cm)	CA-50 (kg)	CA-60 (kg)
V 15	1	06.3	2	25	105	130	260	0.6	0.4	
	2	05	2	25	135	135	270	0.7	0.4	
	3	05	2	230	230	460	0.9	0.7		
V 16	1	06.3	2	25	155	155	310	0.6	0.6	
	2	05	2	185	185	370	0.9	0.9		
	3	05	2	155	155	310	0.6	0.6		
	4	05	2	160	160	320	0.6	0.6		
	5	05	2	29	897	29	955	11.0	4.7	
Total: 7.0										



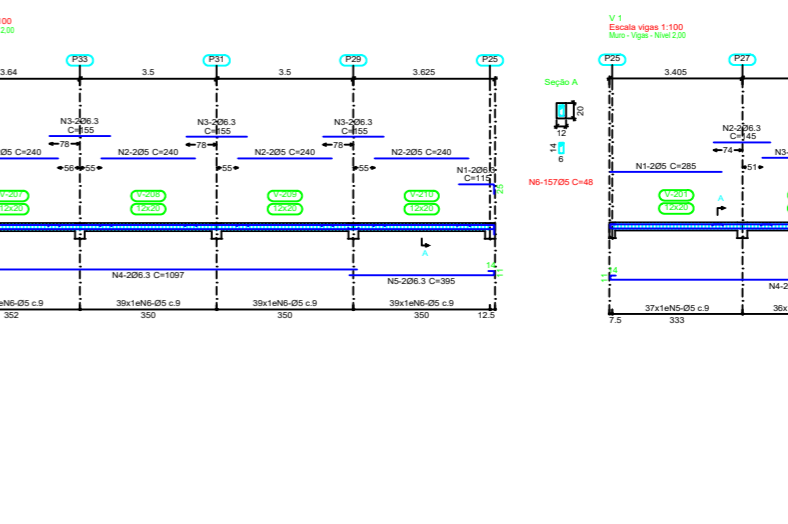
Elemento	Pos.	Diam.	Q.	Dob (cm)	Ret (cm)	Dob (cm)	Comp (cm)	Total (cm)	CA-50 (kg)	CA-60 (kg)
V 16	1	05	2	250	250	500	0.8	0.8		
	2	06.3	2	140	140	280	0.9	0.4		
	3	06.3	2	140	140	280	0.9	0.4		
	4	05	2	215	215	430	1.1	0.7		
	5	05	2	225	225	450	0.5	0.5		
	6	05	2	160	160	320	0.8	0.7		
	7	05	2	145	145	290	0.8	0.8		
	8	06.3	2	65	65	130	0.4	0.4		
	9	06.3	2	244	29	273	546	1.3	1.3	
	10	06.3	2	244	29	273	546	1.3	1.3	
	11	05	82	5	64	5	74	608	8.2	8.2
Total: 9.2										



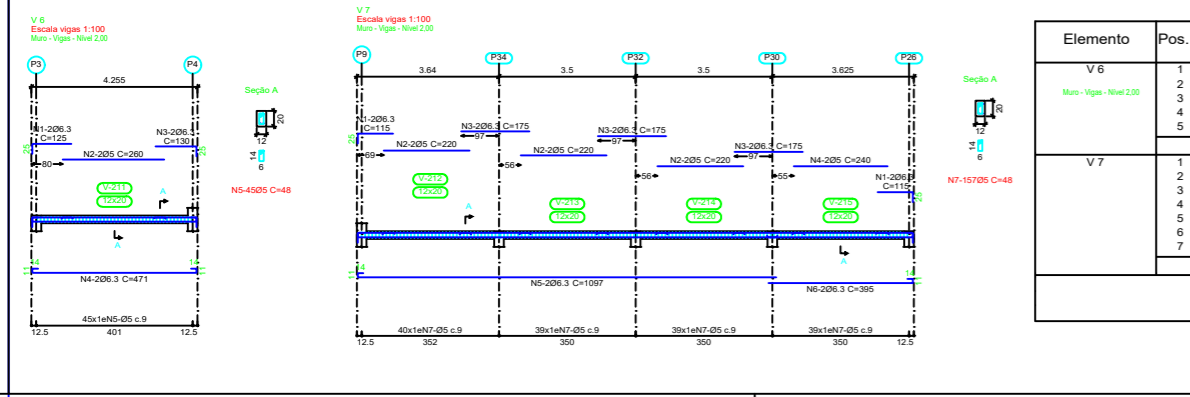
Elemento	Pos.	Diam.	Q.	Dob (cm)	Ret (cm)	Dob (cm)	Comp (cm)	Total (cm)	CA-50 (kg)	CA-60 (kg)
V 21	1	06.3	2	115	140	280	0.7	0.6		
	2	05	2	195	195	390	0.8	0.6		
	3	06.3	2	150	150	300	0.8	0.6		
	4	05	2	190	190	380	0.8	0.6		
	5	05	2	150	150	300	0.8	0.6		
	6	05	2	140	140	280	0.8	0.4		
	7	06.3	2	131	29	160	370	0.9	0.9	
	8	06.3	4	195	195	780	1.9	1.9		
	9	05	64	5	58	5	68	4332	8.4	8.4
Total: 7.9										



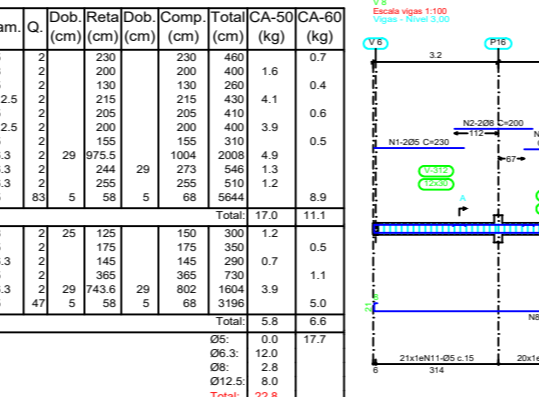
Elemento	Pos.	Diam.	Q.	Dob (cm)	Ret (cm)	Dob (cm)	Comp (cm)	Total (cm)	CA-50 (kg)	CA-60 (kg)
V 17	1	06.3	2	25	105	130	260	0.6	0.4	
	2	05	2	25	135	135	270	0.7	0.4	
	3	05	2	230	230	460	0.9	0.7		
V 18	1	06.3	2	25	155	155	310	0.6	0.6	
	2	05	2	185	185	370	0.9	0.9		
	3	05	2	155	155	310	0.6	0.6		
	4	05	2	160	160	320	0.6	0.6		
	5	05	2	29	897	29	955	11.0	4.7	
Total: 7.0										



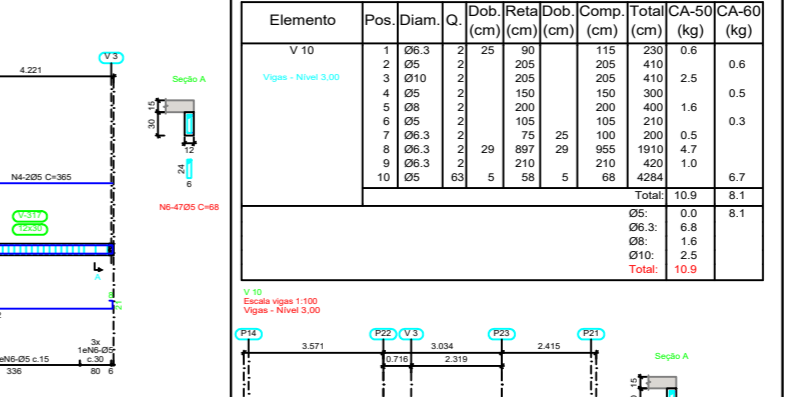
Elemento	Pos.	Diam.	Q.	Dob (cm)	Ret (cm)	Dob (cm)	Comp (cm)	Total (cm)	CA-50 (kg)	CA-60 (kg)
V 18	1	06.3	2	25	105	130	260	0.6	0.8	
	2	05	2	25	135	135	270	0.7	0.4	
	3	05	2	230	230	460	0.9	0.7		
	4	05	2	155	155	310	0.6	0.6		
	5	05	2	160	160	320	0.6	0.6		
	6	06.3	2	29	897	29	955	11.0	4.7	
	7	05	2	29	897	29	955	11.0	4.7	
	8	05	2	29	897	29	955	11.0	4.7	
	9	05	2	29	897	29	955	11.0	4.7	
	10	05	2	29	897	29	955	11.0	4.7	
	11	05	2	29	897	29	955	11.0	4.7	
Total: 19.7										



Elemento	Pos.	Diam.	Q.	Dob (cm)	Ret (cm)	Dob (cm)	Comp (cm)	Total (cm)	CA-50 (kg)	CA-60 (kg)
V 22	1	06.3	2	25	130	200	0.6	0.8		
	2	05	2	255	255	510	1.2	1.2		
	3	06.3	2	165	165	330	0.8	0.8		
	4	05	2	195	195	390	0.8	0.8		
	5	06.3	2	200	200	400	1.0	1.0		
V 23	1	06.3	2	25	100	120	240	0.6	0.6	
	2	05	2	200	200	400	1.1	1.1		
	3	06.3	2	105	25	130	260	0.6	0.6	
	4	05	2	155	155	310	0.6	0.6		
	5	06.3	2	185	185	370	0.9	0.9		
	6	06.3	4	195	195	780	1.9	1.9		
	7	06.3	2	110	25	135	270	0.7	0.7	
	8	06.3	2	763.5	25	788.5	1567	3.9	3.9	
	9	06.3	2	763.5	25	788.5	1567	3.9	3.9	
	10	06.3	2	29	749	29	778	1498	3.7	3.7
	11	05	160	5	58	5	68	4332	8.4	8.4
Total: 18.0										



Elemento	Pos.	Diam.	Q.	Dob (cm)	Ret (cm)	Dob (cm)	Comp (cm)	Total (cm)	CA-50 (kg)	CA-60 (kg)
V 19	1	06.3	2	25	105	130	260	0.6	0.4	
	2	05	2	25	135	135	270	0.7	0.4	
	3	05	2	230	230	460	0.9	0.7		
V 20	1	06.3	2	25	155	155	310	0.6	0.6	
	2	05	2	185	185	370	0.9	0.9		
	3	05	2	155	155	310	0.6	0.6		
	4	05	2	160	160	320	0.6	0.6		
	5	05	2	29	897	29	955	11.0	4.7	
Total: 7.0										



Elemento	Pos.	Diam.	Q.	Dob (cm)	Ret (cm)	Dob (cm)	Comp (cm)	Total (cm)	CA-50 (kg)	CA-60 (kg)
V 24	1	06.3	2	25	100	120	240	0.6	0.6	
	2	05	2	200	200	400	1.1	1.1		
	3	06.3	2	105	25	130	260	0.6	0.6	
	4	05	2	155	155	310	0.6	0.6		
	5	06.3	2	185	185	370	0.9	0.9		
	6	06.3	4	195	195	780	1.9	1.9		
	7	06.3	2	110	25	135	270	0.7	0.7	
	8	06.3	2	763.5	25	788.5	1567	3.9	3.9	
	9	06.3	2	763.5	25	788.5	1567	3.9	3.9	
	10	06.3	2	29	749	29	778	1498	3.7	3.7
	11	05	160	5	58	5	68	4332		